

V-MAX

Vascular Imaging Tables

*With all the features of the competition...
At a fraction of the cost*

4-WAY FLOAT &
TRENDLENBURG



V-MAX

24" wide top shown

V-MAX-T

STANDARD FEATURES

- t able top automatically stops at level
- diving board style for easy c-arm access
- Large patient capacity 500lb pound load
- 2" patient high quality comfort pad
- f acial cut out access
- Light weight – easy to physically move the table
- 24" wide top eliminates the needs for arm boards
- 27" wide top is also available
- easy patient transfer to table
- Low height for patient boarding
- a ny Or

 **blueox**
MEDICAL

V-MAX

Height HT AnD 4 w Ay Flo AT

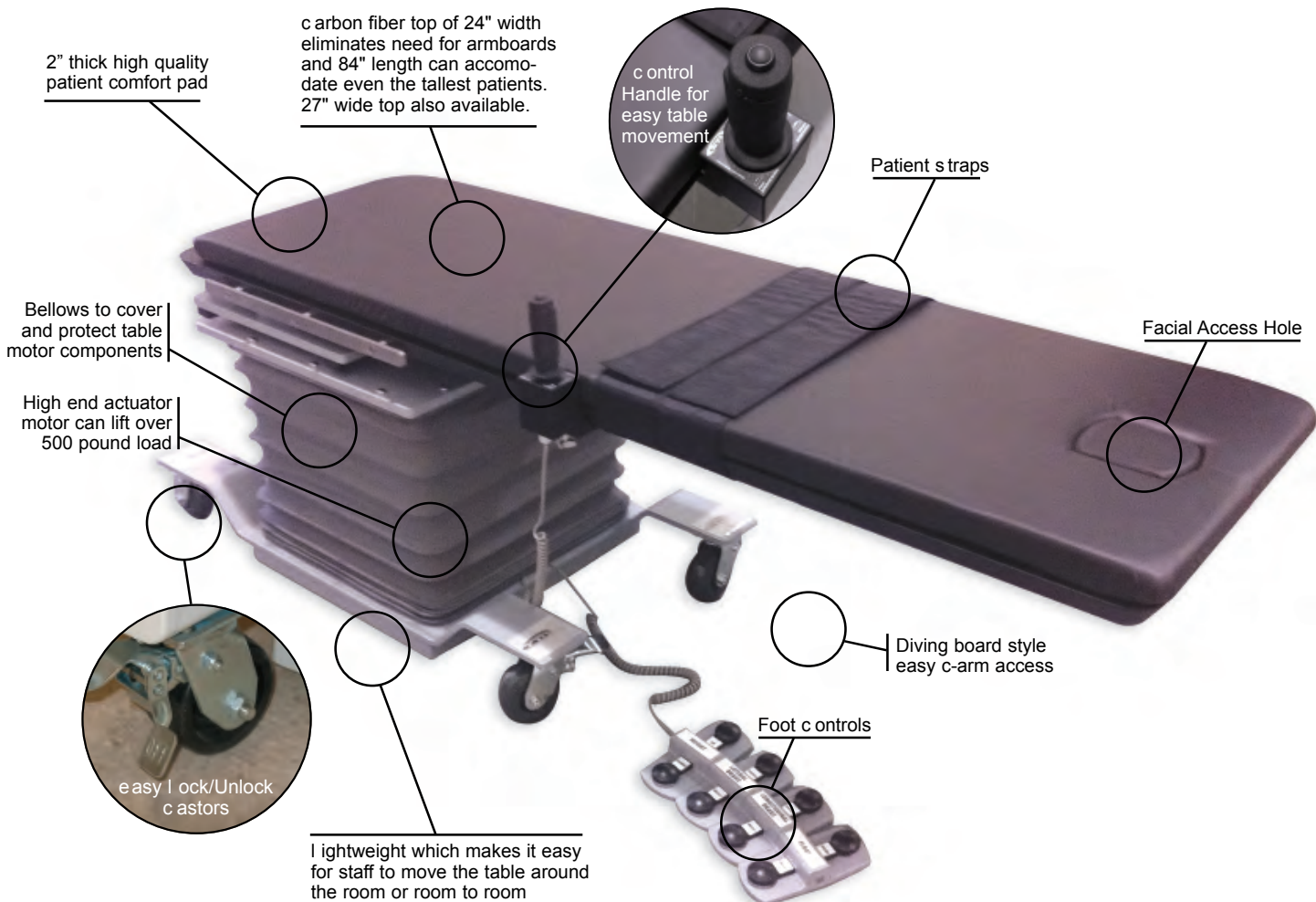
- Height 28-38
- Lateral float 14"
- Longitudinal float 36"



V-MAX-T

Height HT, 4 w Ay Flo AT AnD Tren Delen BUrg

- Height 30-40
- Lateral float 14"
- Longitudinal float 36"
- Trendelenburg +/-16 degrees



OPTIONS ▾

JOYSTICK CONTROL



MUSHROOM JOYSTICK



MODULAR SIDE RAIL SYSTEM



SURGICAL ARMBOARDS

(removable armboard rotates 180 degrees)



PROCEDURAL ARMBOARDS

(each armboard rotates 180 degrees)



LOLLYPOP ARMBOARD



RECTANGULAR ARMBOARD



VMAX STRAPS can be undone & left hanging

